



# COUNTRY AIRE



## COUNTRY AIRE Model number: 25RGR32683EH19

**3 beds • 2 baths • 2112 sq.ft. • 32' width • 66' depth**

Our home building facilities invest in continuous product and process improvements. Plans, dimensions, features, materials, specifications and availability are subject to change without notice or obligation. Renderings and floor plans are representative likenesses of our homes and may differ from the actual homes. We invite you to tour a Home Center near you and inspect the highest value in quality housing available or call (865) 970-7355 to speak with a Home Consultant. Copyright 2017, CMH. All rights reserved.

<https://www.claytonsupercenter.com>

## CLAYTON HOMES-ALCOA

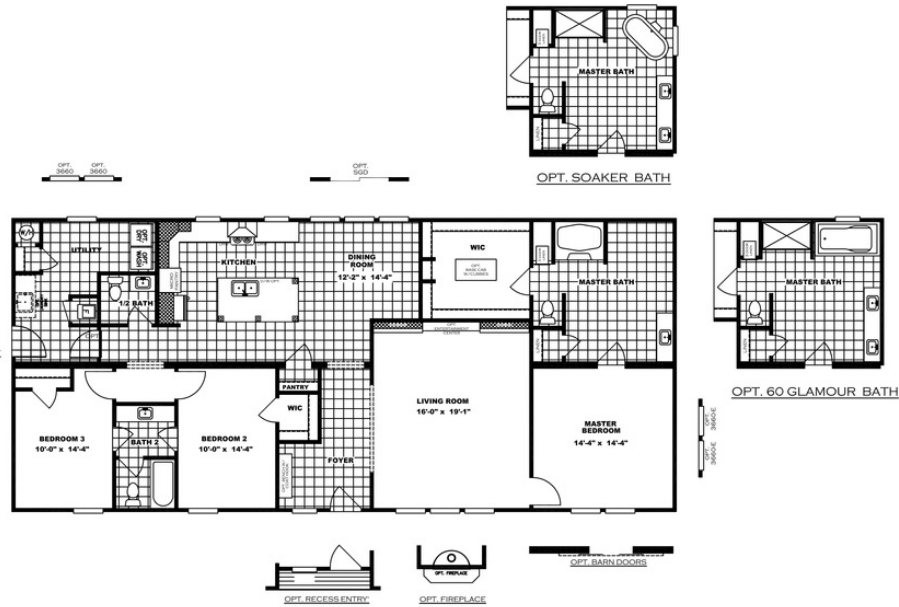
2628 ALCOA HIGHWAY  
ALCOA, TN 37701

Monday - Thursday: 9am to 5pm  
Friday: 9am to 5pm  
Saturday: 9am to 5pm  
Sunday: Closed

(865) 970-7355



# COUNTRY AIRE



## COUNTRY AIRE Model number: 25RGR32683EH19

**3 beds • 2 baths • 2112 sq.ft. • 32' width • 66' depth**

Our home building facilities invest in continuous product and process improvements. Plans, dimensions, features, materials, specifications and availability are subject to change without notice or obligation. Renderings and floor plans are representative likenesses of our homes and may differ from the actual homes. We invite you to tour a Home Center near you and inspect the highest value in quality housing available or call (865) 970-7355 to speak with a Home Consultant. Copyright 2017, CMH. All rights reserved.

<https://www.claytonsupercenter.com>

## CLAYTON HOMES-ALCOA

2628 ALCOA HIGHWAY  
ALCOA, TN 37701

Monday - Thursday: 9am to 5pm  
Friday: 9am to 5pm  
Saturday: 9am to 5pm  
Sunday: Closed

(865) 970-7355